

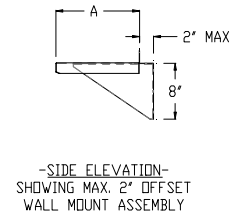
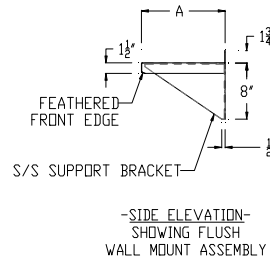
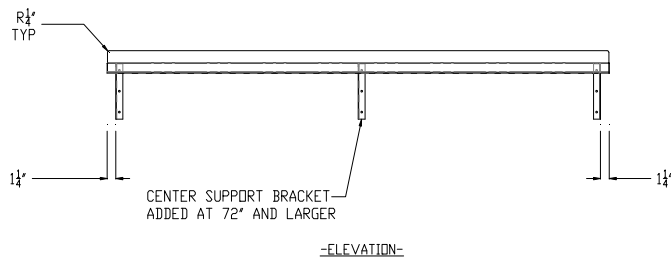
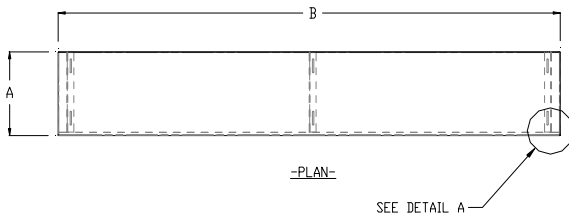
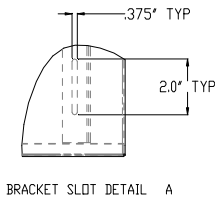
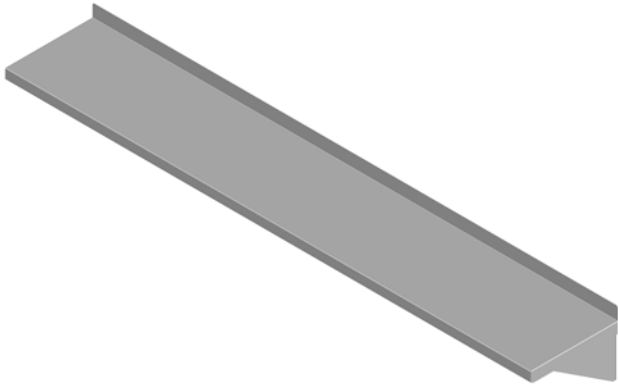


STAINLESS STEEL WALL SHELVES

PROJECT#: _____

ITEM# _____

MODEL# _____



STAINLESS STEEL WALL SHELVES					
EHS - SERIES 400 SERIES S/S TOP & 400 SERIES S/S SUPPORT	QTY	PRODUCT DIMENSIONS		SHS - SERIES 300 SERIES S/S TOP & 300 SERIES S/S SUPPORT	QTY
		A WIDTH	B LENGTH		
EHS10F1-1224		12"	24"	SHS10F1-1224	
EHS10F1-1236		12"	36"	SHS10F1-1236	
EHS10F1-1242		12"	42"	SHS10F1-1242	
EHS10F1-1248		12"	48"	SHS10F1-1248	
EHS10F1-1254		12"	54"	SHS10F1-1254	
EHS10F1-1260		12"	60"	SHS10F1-1260	
EHS10F1-1266		12"	66"	SHS10F1-1266	
EHS10F1-1272		12"	72"	SHS10F1-1272	
EHS10F1-1278		12"	78"	SHS10F1-1278	
EHS10F1-1284		12"	84"	SHS10F1-1284	
EHS10F1-1290		12"	90"	SHS10F1-1290	
EHS10F1-1296		12"	96"	SHS10F1-1296	
EHS10F1-12102		12"	102"	SHS10F1-12102	
EHS10F1-12108		12"	108"	SHS10F1-12108	
EHS10F1-12114		12"	114"	SHS10F1-12114	
EHS10F1-12120		12"	120"	SHS10F1-12120	
EHS10F1-1624		16"	24"	SHS10F1-1624	
EHS10F1-1636		16"	36"	SHS10F1-1636	
EHS10F1-1642		16"	42"	SHS10F1-1642	
EHS10F1-1648		16"	48"	SHS10F1-1648	
EHS10F1-1654		16"	54"	SHS10F1-1654	
EHS10F1-1660		16"	60"	SHS10F1-1660	
EHS10F1-1666		16"	66"	SHS10F1-1666	
EHS10F1-1672		16"	72"	SHS10F1-1672	
EHS10F1-1678		16"	78"	SHS10F1-1678	
EHS10F1-1684		16"	84"	SHS10F1-1684	
EHS10F1-1690		16"	90"	SHS10F1-1690	
EHS10F1-1696		16"	96"	SHS10F1-1696	
EHS10F1-16102		16"	102"	SHS10F1-16102	
EHS10F1-16108		16"	108"	SHS10F1-16108	
EHS10F1-16114		16"	114"	SHS10F1-16114	
EHS10F1-16120		16"	120"	SHS10F1-16120	

SHELF SPECIFICATIONS:

ECONOMY Series:

TOP: 18 GA. 400 Series Stainless Steel

CANTILVERED BRACETS: 16 GA. 400 Series Stainless

STANDARD Series:

TOP: 18 GA. 300 Series Stainless Steel

CANTILVERED BRACETS: 16 GA. 300 Series Stainless

CONSTRUCTION:

- ◆ Cantilvered Brackets Stud Bolted to Underside of Shelf Tops with Acorn Nuts
- ◆ Cantilvered Brackets Adjustable for Flush Wall Mount to Maximum 2" Offset from Wall
- ◆ Shelves At or Above 72" to Receive Center Cantilever Bracket Support



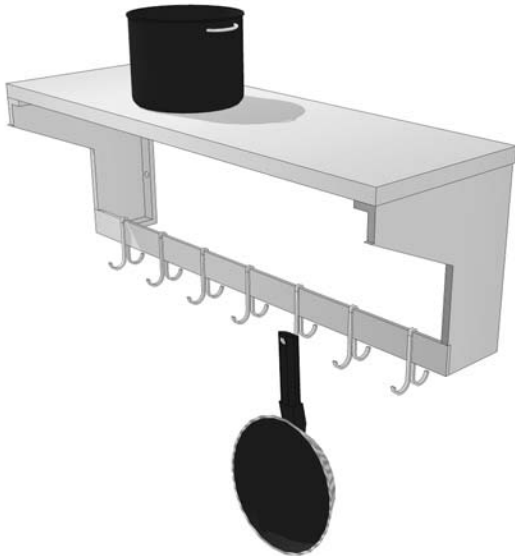
POT RACK SHELF & MICROWAVE SHELF

PRS & MWS SERIES

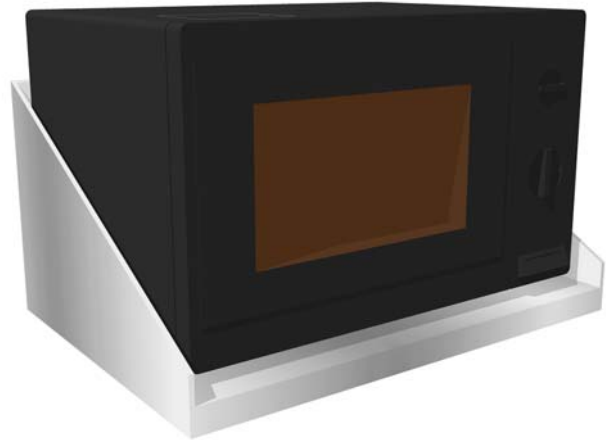
PROJECT#: _____

ITEM# _____

MODEL# _____



POT RACK SHELF



MICROWAVE SHELF

CONSTRUCTION:

- ◆ Fully utilize wall space with our pot rack/shelf combination.
- ◆ The shelf and cantilevered mounting brackets feature all welded 18 gauge stainless steel construction.
- ◆ All corners are ground smooth and polished.
- ◆ The riser on the back of each shelf is held away from the wall 1" to comply with N.S.F. requirements.
- ◆ Shelves are available in both 12" and 16" widths and lengths from 3' to 6'.
- ◆ The pot rack is single bar aluminum construction from heavy duty 3/16" x 2" bar. The plated steel pot hooks slide easily to accommodate implements of various

POT RACK SHELF

MODEL	WIDTH	LENGTH	WEIGHT
PRS-1236	12"	36"	16 lbs
PRS-1248	12"	48"	20 lbs
PRS-1260	12"	60"	26 lbs
PRS-1272	12"	72"	26 lbs
PRS-1636	16"	48"	24 lbs
PRS-1648	16"	48"	24 lbs
PRS-1660	16"	60"	28 lbs
PRS-1672	16"	72"	32 lbs

CONSTRUCTION:

- ◆ This shelf (24" wide and 26" deep) is designed to accommodate commercial microwaves; especially those from Sharp, Litton, and Amana.
- ◆ The shelf and cantilevered brackets are constructed of 18 gauge stainless steel which makes them both durable and sanitary.
- ◆ The backsplash is 8" in height at the rear of the shelf. The high end splashes are designed to hold the microwave securely in place.
- ◆ A 2" diameter power cord opening is provided in the back of the shelf to facilitate a power hookup.

MICROWAVE SHELF

MODEL	-
MWS-2426	40 lbs